

B618 LTE CPE

Quick Start



Thank you for purchasing the LTE CPE. This LTE CPE brings you a high speed wireless network connection.

This document will help you understand your LTE CPE, so you can start using it right away. Please read this document carefully before using your LTE CPE.

For detailed information about the functions and configurations of the LTE CPE, refer to the **Help** on the web management page that comes with the LTE CPE.

Getting to know your LTE CPE

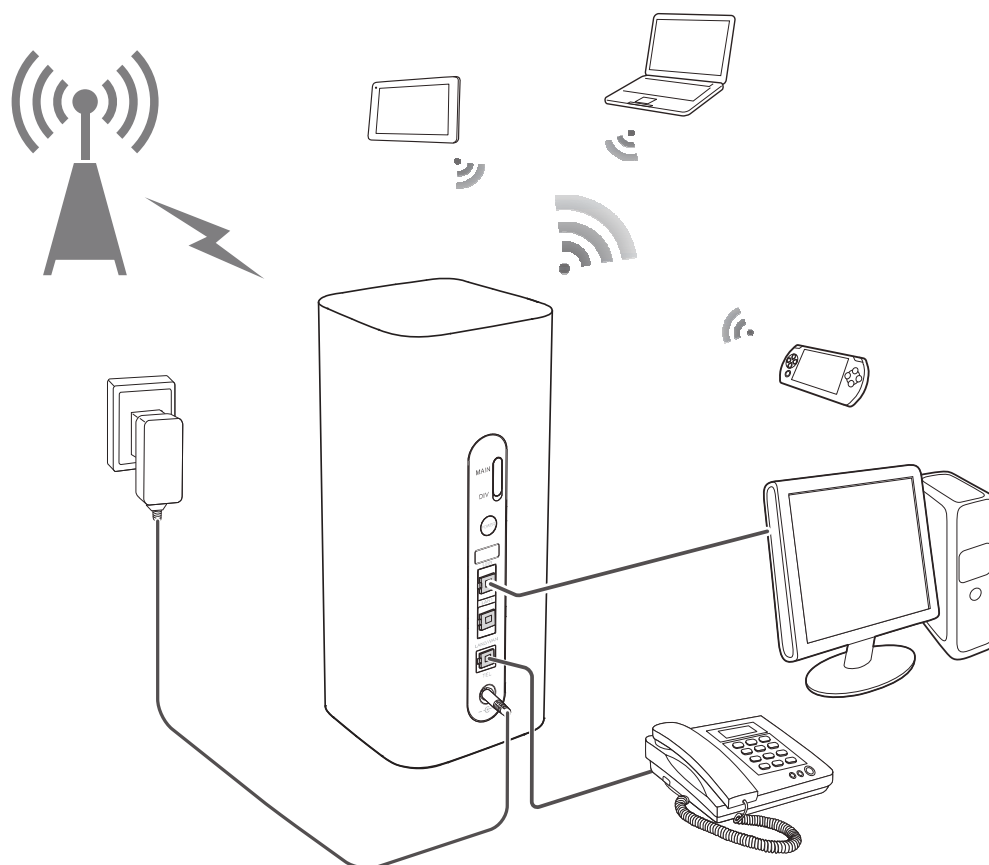
Note:

- During thunderstorms and rainy weather, turn off and disconnect the LTE CPE.
- The LTE CPE function descriptions and illustrations in this document are for your reference only. The product you have purchased may vary.

Application scenario

The LTE CPE can:

- Provide Internet access for Wi-Fi® devices and a computer.
- Connect to a telephone for voice services.
- Expand LAN coverage together with a hub or a switch.



Note:

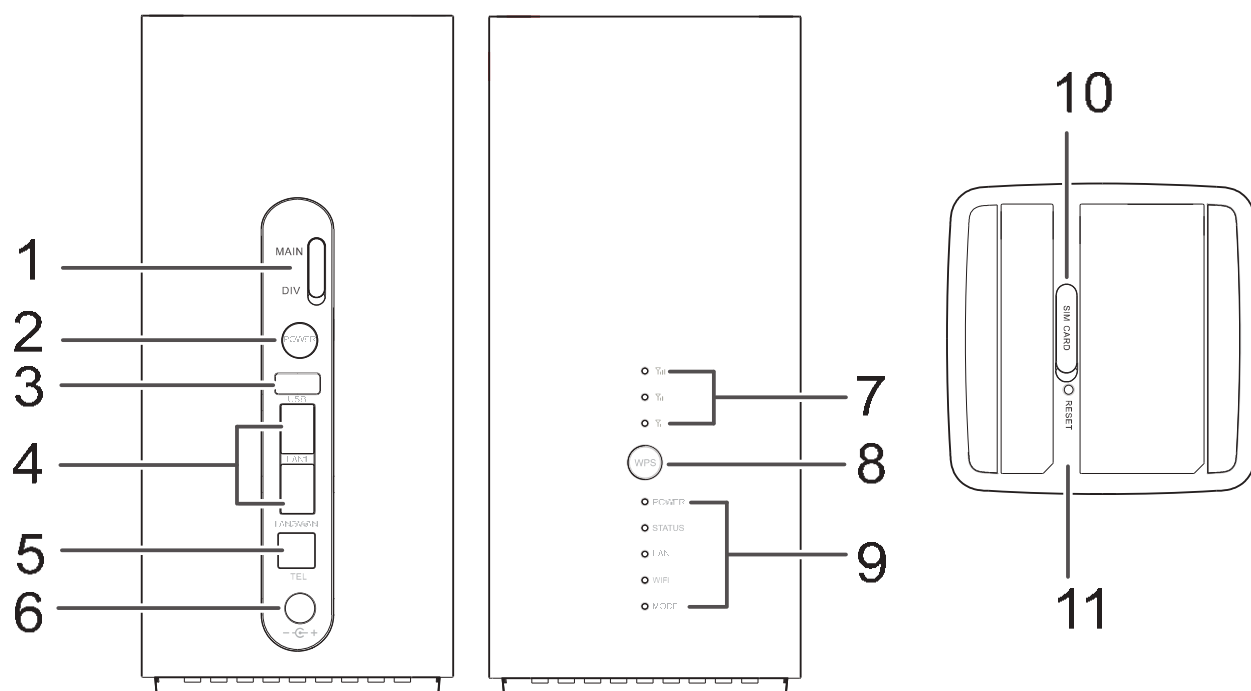
When the LTE CPE is in use, you can alter its position or orientation to improve signal reception.

Selecting the installation environment

Obstacles such as concrete and wooden walls will affect the transmission of the network signal. It is recommended that when you install LTE CPE you choose an open space.

Keep the LTE CPE away from equipment that generates strong magnetic and electric fields, for instance microwaves, refrigerators, and satellite receivers.

2 Appearance



1. External antenna sockets*

Connect to external antennas.

2. Power button

Press and hold to power the B618 on or off.

3. USB port

Connect to a USB device.

4. WAN/LAN port

- Working as a LAN port when connected to a computer, switch, or other LAN device.

- Working as a WAN port when connected to an Ethernet port on the wall.

5. Landline phone port

Connect to a telephone.

6. Power input

Connect to compatible power adapter.

7. Signal indicators

Green: signal reception available (more indicators mean better reception).

8. WPS button

Press and hold to active WPS connection when Wi-Fi is turned on.

9. Indicators

Power LED indicator

- Off: Power off.
- On: Power on.

Status LED indicator

- Off: Data server connection is disconnected.
- Blinking in green: Firmware update.
- Green: Get IP address of WAN.

LAN LED indicator

- Off: No device is connected to a LAN port.
- Blinking: data is being transmitted through a LAN port.
- Green: At least one of the LAN ports is connected to a device.

Wi-Fi LED indicator

- Off: Both 2.4G and 5G Wi-Fi is closed.
- Blinking in green: WPS open.
- Green: Both or one of the 2.4G and 5G Wi-Fi is opened.

Mode LED indicator

- Steady cyan/blue/ yellow: connected to a mobile network.
- Steady green: connected to an Ethernet network.
- Steady red:

The SIM card is not recognized, the PIN has not been entered, or the PIN verification failed.

10. Micro-SIM card slot

Accommodate a micro-SIM card.

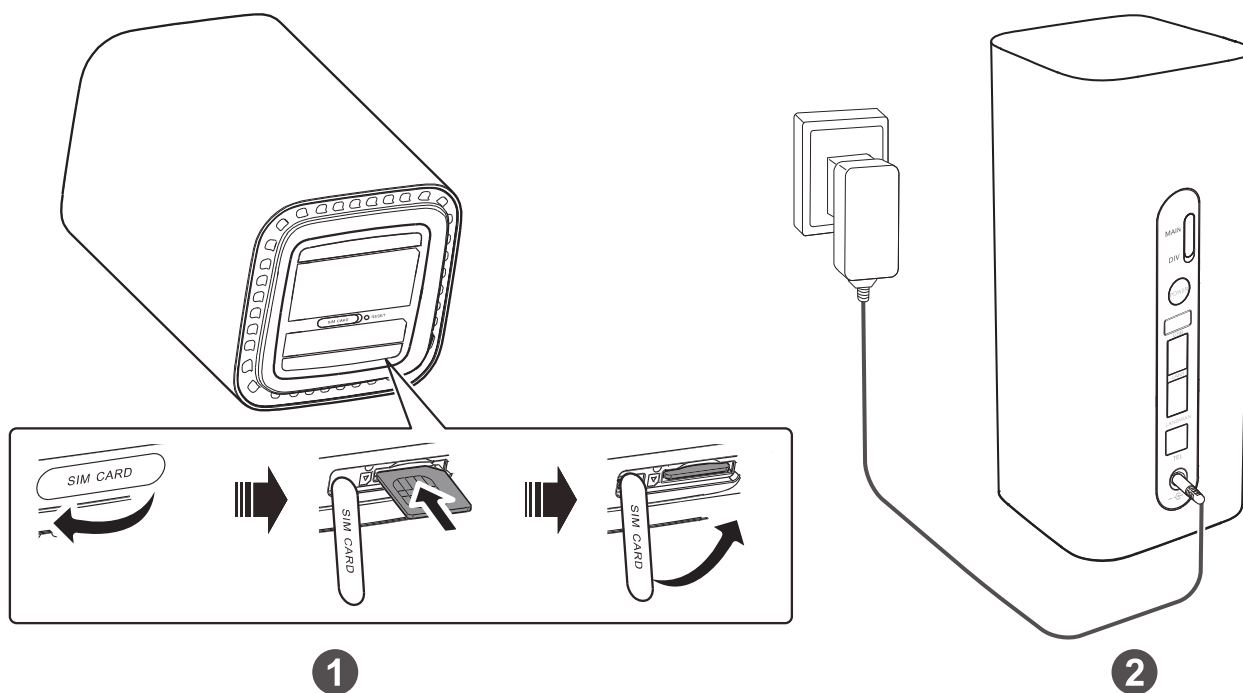
11. RESET button

Restore the LTE CPE to its factory settings.

* External antennas

The external antennas are optional accessory. To buy external antennas, please contact network service provider.

3 Setup



1. Installing the micro-SIM card

Install the micro-SIM card according to the illustration.

Note:

- When removing the micro-SIM card, gently press the micro-SIM card in, then release. The card will automatically pop out.
- Do not remove the micro-SIM card when the LTE CPE is powered on. Doing so will affect the performance of your LTE CPE, and data stored on the micro-SIM card may be lost.

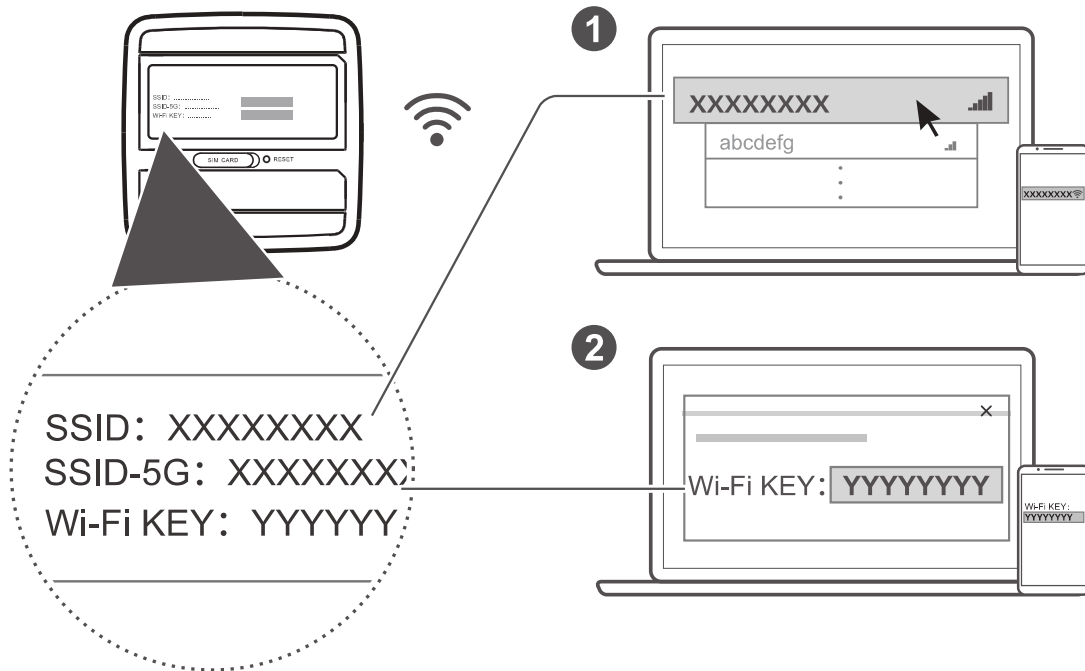
2. Connecting to a power adapter

Install the power adapter according to the illustration.

Note:

Use the provided power adapter. Use of an incompatible power adapter or one from an unknown manufacturer may cause the LTE CPE to malfunction, fail, or could even cause a fire. Such use voids all warranties, whether expressed or implied, on the product.

4 Connecting to your router's Wi-Fi network

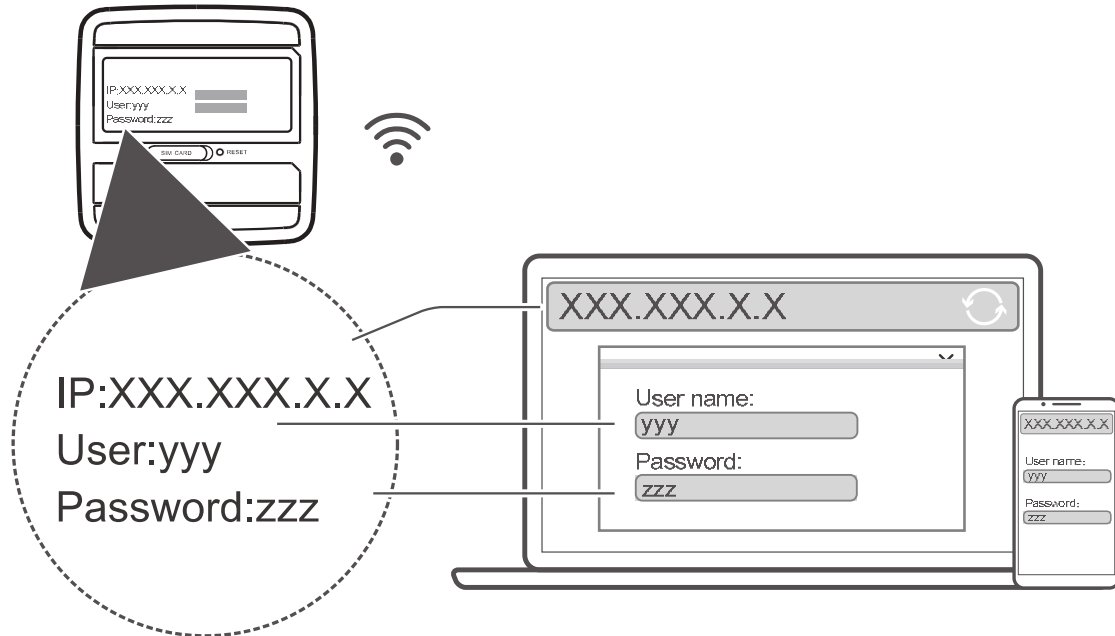


Once the router has connected to a mobile data network, you can connect your computer or mobile phone to the router's Wi-Fi network to access the Internet. Please refer to the label on the bottom of the router for the default wireless network name (**SSID**) and password (**Wi-Fi KEY**).

Note:

- When the Wi-Fi LED indicator is steady on, Wi-Fi is enabled. To enable or disable Wi-Fi, refer to the help section on the router's web-based management page.
- Ensure that you promptly change the Wi-Fi network name and password on the web-based management page to prevent unauthorized access to your Wi-Fi network. Once you have changed the password, you will need to reconnect to the router's Wi-Fi network.

5 Configuring your router



You can configure the router using the web-based management page. Please refer to the label on the bottom of the router for the default IP address, user name, and password.

More information can be found in the help section of the web-based management page.

Note:

You will be prompted to change the default login password for the web-based management page to prevent unauthorized users from changing the router's settings.

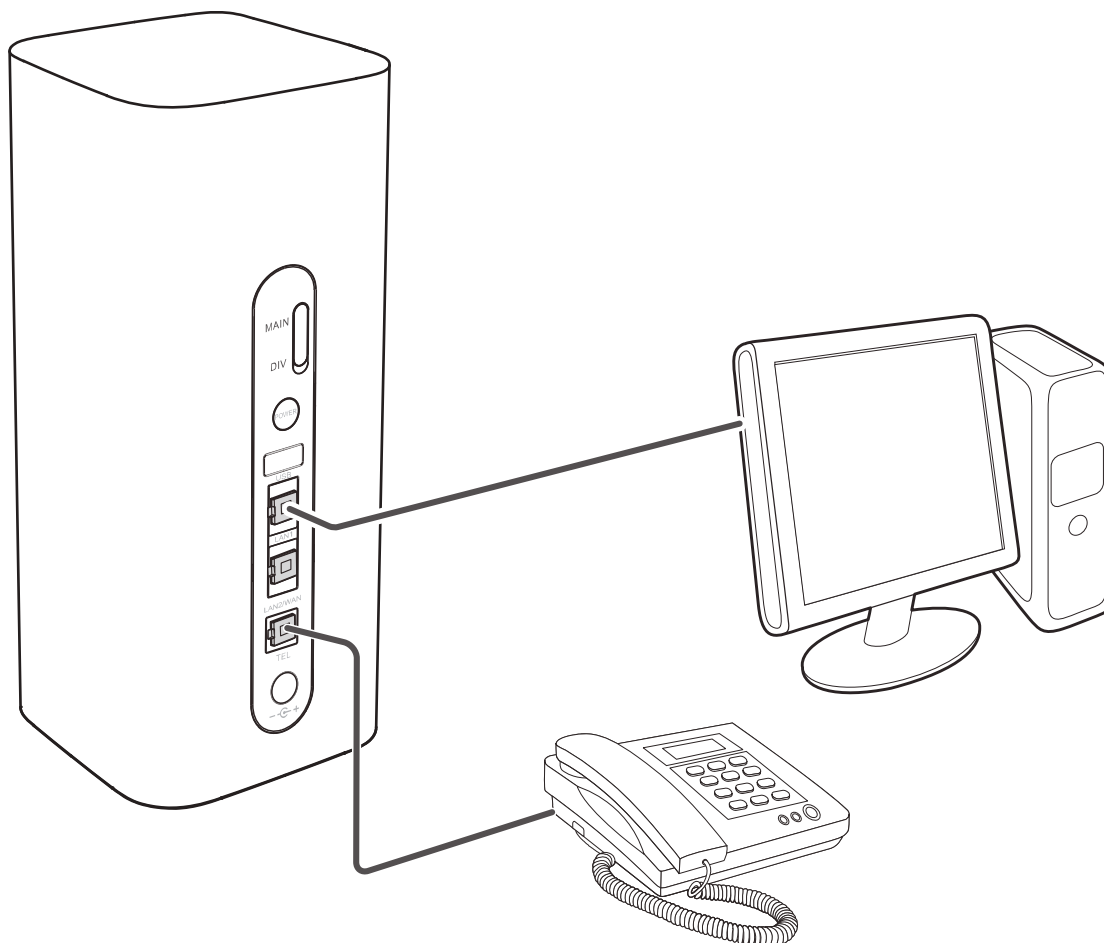
6 Optional configurations

Note:

The features described in this section are for reference purposes only. Your router may not support all of these features.

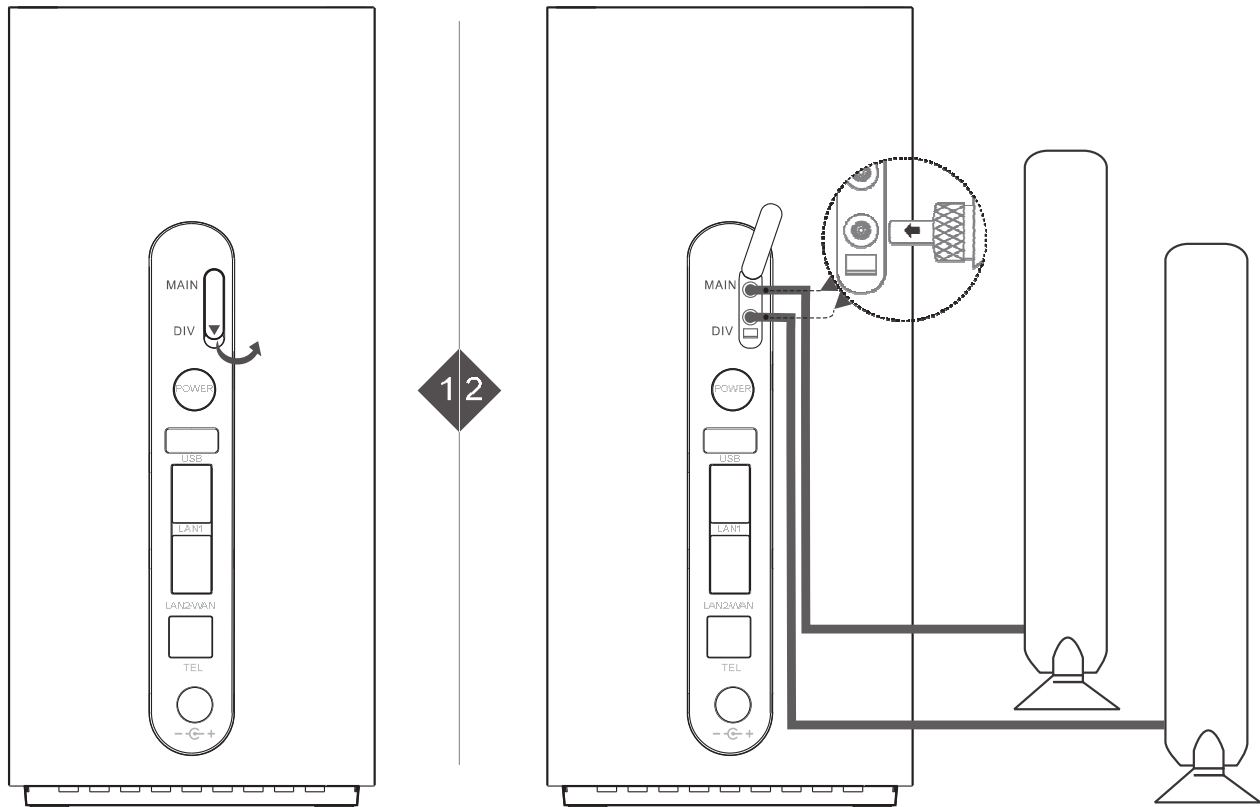
1. Connecting multiple devices

You can connect a computer, or landline phone to the router to access the Internet, make telephone calls, and more.



2. Installing external antennas

You can install external antennas to improve signal reception. Please contact your network service provider to purchase the antennas.



Note:

Turn off the router and unplug the power adapter before installing any external antennas.

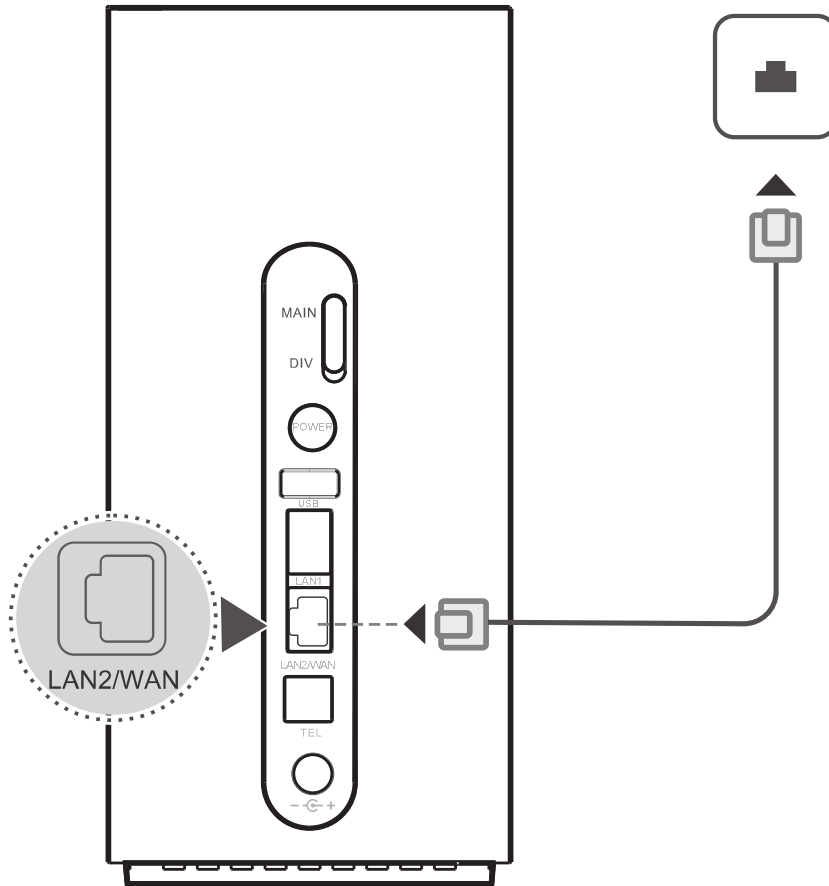
External antennas are only suitable for indoor use. Do not use external antennas during thunderstorms.

Only use external antennas provided by your network service provider.

3. Accessing the Internet through an Ethernet port

You can connect the router to a wall-mounted Ethernet port using an Ethernet cable to connect to the Internet when you have used up your data allowance.

Configure the relevant settings on the web-based management page before connecting to the Internet through an Ethernet port. More information can be found in the help section of the web-based management page.



4. Restoring to Factory Settings

If you forget some configuration parameters, you can restore the LTE CPE to its factory settings and then configure the LTE CPE again.

Use a sharply pointed object to press and hold the **RESET** button until the Power indicator turns off. The LTE CPE is then restored to its factory settings.

Note:

After you carry out this operation, the LTE CPE's personal configuration parameters will all be deleted. All configurations on the web management page will be restored to the factory settings.

5. Establishing a WPS Connection

If the Wi-Fi device to be connected to the LTE CPE supports WPS, the wireless network encryption key is generated automatically and there is no need to enter it manually. The steps for WPS connection are as follows:

1. Turn on the CPE.
2. Turn on the Wi-Fi device to be connected to the LTE CPE.
3. Activate the LTE CPE's WPS.

Note:

Press and hold the WPS button for two to five seconds to set up a 2.4 GHz WPS

connection, or press and hold the button for more than five seconds to set up a 5 GHz WPS connection.

4. Activate the Wi-Fi device's WPS.

Note:

For specific instructions for the Wi-Fi device, refer to the device's user manual.

6. Downloading Huawei HiLink App

Scan the QR code to download the Huawei HiLink App and configure the router from your phone.

