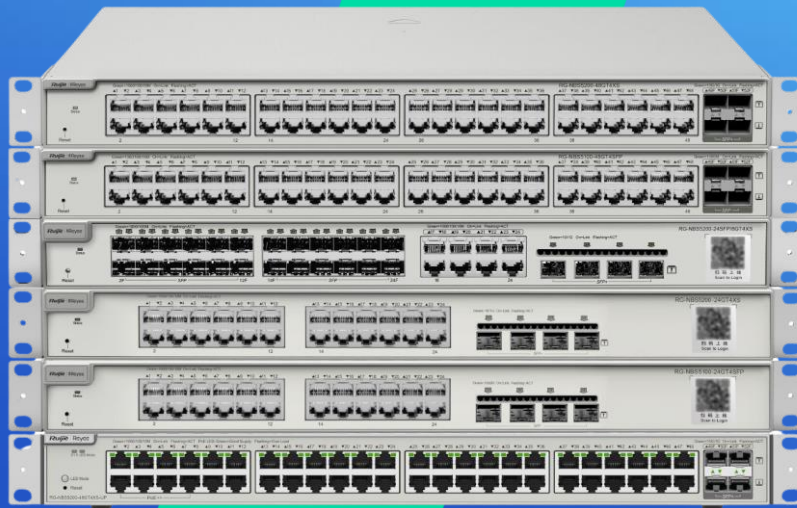


# RG-NBS51/52 series Layer 3 Cloud Managed Switches

DATASHEET

[Explore More](#) 



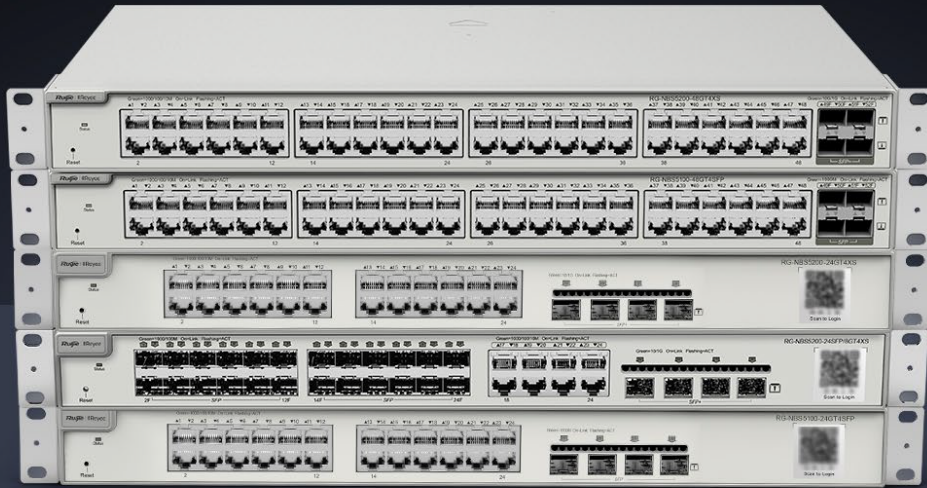
## Highlights

- Enterprise-class quality ensures High Performance
- Dynamic routing allows traffic to be routed at Layer 3
- Multiple security policies protect your network
- Lifetime management on Ruijie Cloud at anytime anywhere

# Highlight Features

## RG-NBS5000 Series Switch

High performance Layer 3 switch for core/aggregation



Dynamic Routing



6kV Surge Protection



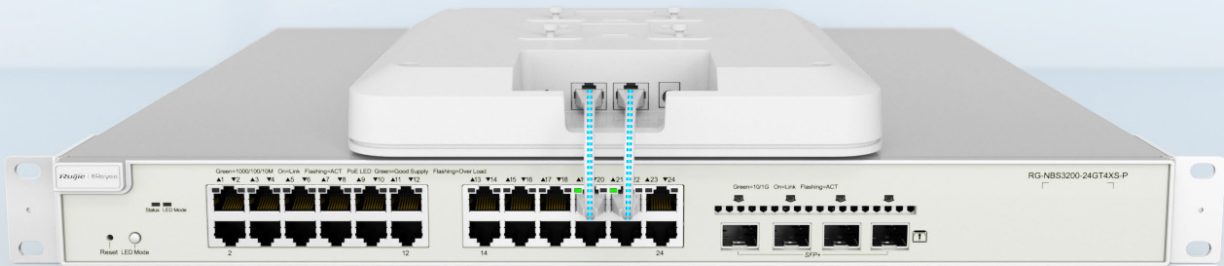
5 Years Warranty

## Enterprise-class Quality Ensures High Performance

Link Aggregation

IGMP Snooping

VLAN



# Highlight Features

## Enterprise-class Quality Ensures High Performance

Link Aggregation

**IGMP Snooping**

VLAN

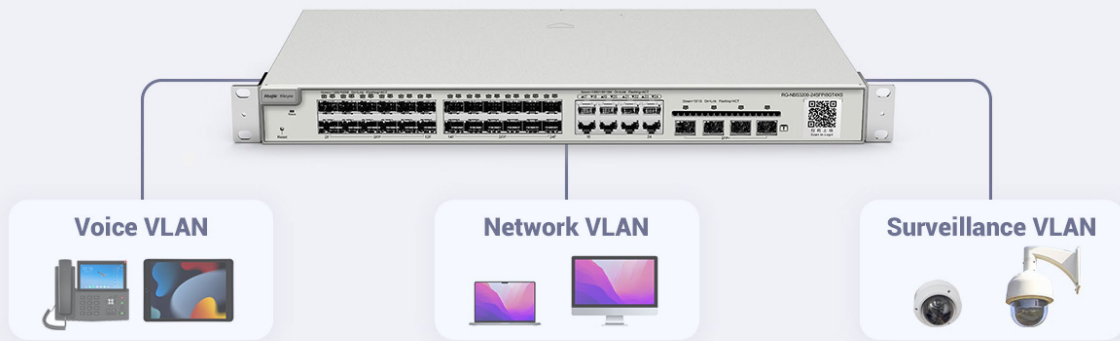


## Enterprise-class Quality Ensures High Performance

Link Aggregation

IGMP Snooping

**VLAN**



# Highlight Features

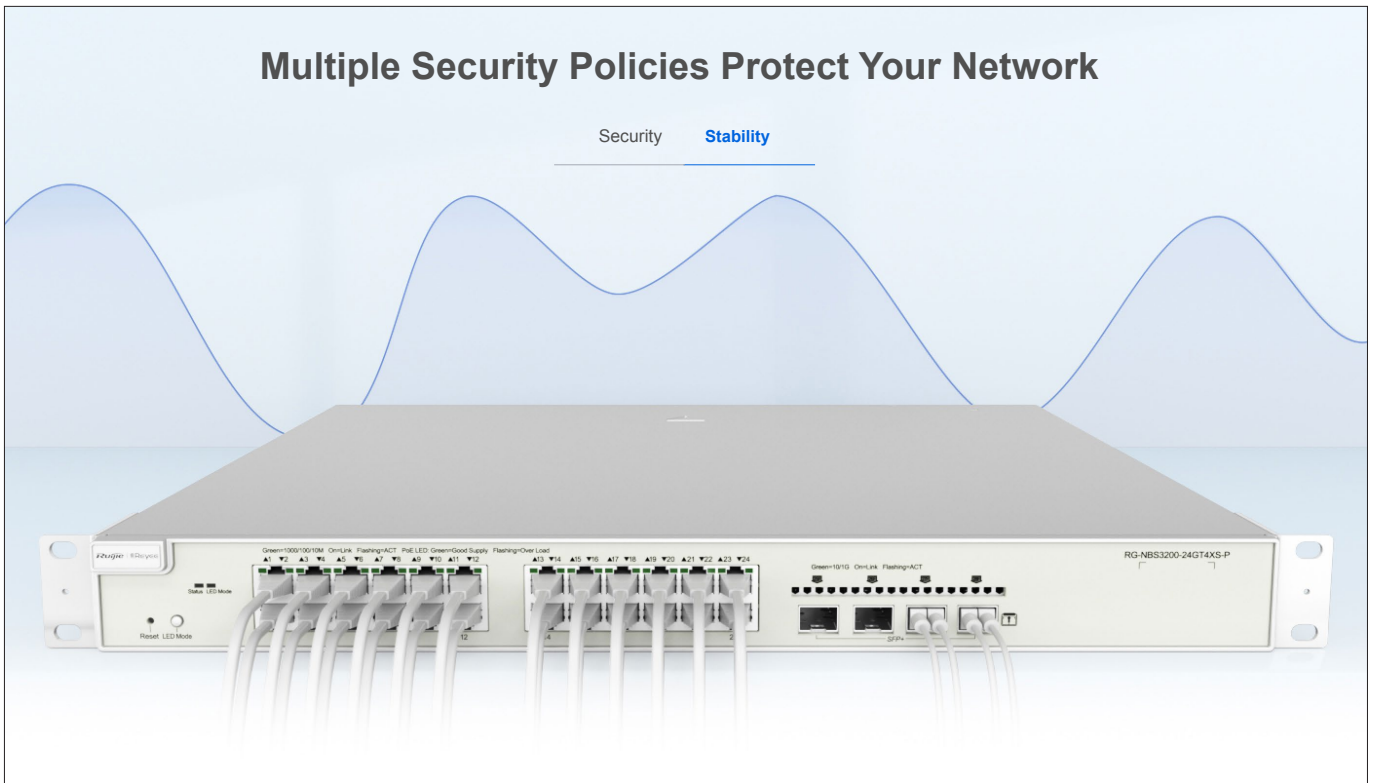
## Multiple Security Policies Protect Your Network

Security Stability



## Multiple Security Policies Protect Your Network

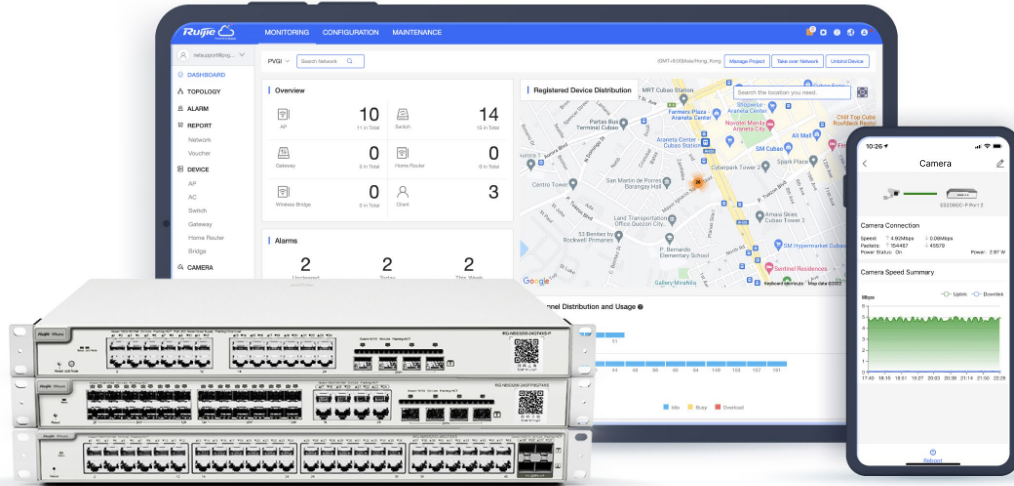
Security Stability



# Highlight Features

## Cloud, Make Your Business Easy

- SON, zero touch provisioning to Cloud
- Monitor switch statistics at anytime anywhere
- Configure VLANs on Ruijie Cloud APP
- Easy maintenance, save onsite time and cost





# Specifications

Specifications	RG-NBS5100-24GT4SFP	RG-NBS5100-48GT4SFP	RG-NBS5100-24GT4SFP-P	RG-NBS5200-24GT4XS	RG-NBS5200-48GT4XS	RG-NBS5200-24SFP/8GT4XS	RG-NBS5200-48GT4XS-UP	RG-NBS5200-24GT4XS-P
<b>Basic</b>								
Total Number of Electrical Ports	24	48	24	24	48	8	48	24
Total Number of Optical Ports	4	4	4	4	4	28	4	4
Number of Combo Ports	N/A	N/A	N/A	N/A	N/A	8	N/A	N/A
Number of 1 Gbps Optical Ports (SFP)	4	4	4	N/A	N/A	24	N/A	N/A
Number of 10 Gbps Optical Ports (SFP+)	N/A	N/A	N/A	4	4	4	4	4
Number of 10/100/1000Base-T Ports	24	48	24	24	48	8	48	24
Number of PoE/PoE+ Ports	N/A	N/A	24	N/A	N/A	N/A	48	24
Number of PoE/PoE+/PoE++ Ports	N/A	N/A	N/A	N/A	N/A	N/A	8	N/A
Max. PoE Power Budget	N/A	N/A	370W	N/A	N/A	N/A	740W	370W
PoE Power Pins	N/A	N/A	1 2+ 3 6-	N/A	N/A	N/A	1-8port (1 2- 3 6+ 4 5+ 7 8-) 9-48 port (1 2+ 3 6- )	1 2+ 3 6-













Specifications	RG-NBS5100-24GT4SFP	RG-NBS5100-48GT4SFP	RG-NBS5100-24GT4SFP-P	RG-NBS5200-24GT4XS	RG-NBS5200-48GT4XS	RG-NBS5200-24SFP/8GT4XS	RG-NBS5200-48GT4XS-UP	RG-NBS5200-24GT4XS-P
<b>Web Authentication</b>	Yes	Yes	Yes	Yes	Yes	Yes	Yes	Yes
<b>Layer 3 features</b>								
<b>Static Routing</b>	Yes	Yes	Yes	Yes	Yes	Yes	Yes	Yes
<b>DHCP Server</b>	Yes	Yes	Yes	Yes	Yes	Yes	Yes	Yes
<b>RIP</b>	Yes	Yes	Yes	Yes	Yes	Yes	Yes	Yes
<b>RIPng(RIP Next Generation)</b>	Yes	Yes	Yes	Yes	Yes	Yes	Yes	Yes
<b>OSPFv2(Open Shortest Path First Version 2)</b>	Yes	Yes	Yes	Yes	Yes	Yes	Yes	Yes
<b>OSPFv3</b>	Yes	Yes	Yes	Yes	Yes	Yes	Yes	Yes
<b>Virtual Cluster Switching (VCS)</b>	No	No	No	Yes	Yes	Yes	Yes	Yes
<b>Hardware Specifications</b>								
<b>Reset Button</b>	Yes	Yes	Yes	Yes	Yes	Yes	Yes	Yes
<b>DIP Switch</b>	N/A	N/A	LED MODE	N/A	N/A	N/A	LED MODE	LED MODE
<b>Cable Hot-Swappable</b>	Yes	Yes	Yes	Yes	Yes	Yes	Yes	Yes
<b>Power Supply</b>	Rated voltage range: 100-240VAC Maximum voltage range: 90-264VAC Frequency: 50/60Hz	Rated voltage range: 100-240VAC Maximum voltage range: 90-264VAC Frequency: 50/60Hz	Rated voltage range: 100-240V~ Maximum voltage range: 90-264V~ Frequency: 50/60Hz	Rated voltage range: 100-240VAC Maximum voltage range: 90-264VAC Frequency: 50/60Hz Rated	Rated voltage range: 100-240VAC Maximum voltage range: 90-264VAC Frequency: 50/60Hz	Rated voltage range: 100-240VAC Maximum voltage range: 90-264VAC Frequency: 50/60Hz	Rated voltage range: 100-240V~ Maximum voltage range: 90-264V~ Frequency: 50/60Hz	Rated voltage range: 100-240V~ Maximum voltage range: 90-264V~ Frequency: 50/60Hz









**Ruijie | RYCE**

 **Redefine your easy network**

---

**Copyright ©2000-2024 Ruijie Networks Co., Ltd. All rights reserved.**

No part of this document may be reproduced or transmitted in any form or any means without prior written consent of Ruijie Networks Co., Ltd.

**Notice**

This content is applicable only to regions outside the China mainland. Ruijie Networks Co., Ltd. reserves the right to interpret this content.

The information contained herein is subject to change without notice. Nothing herein should be construed as constituting an additional warranty. Ruijie Networks Co., Ltd. shall not be liable for technical or editorial errors or omissions contained herein.



Ruijie Networks Co., Ltd.

**Official Website:** <https://www.ruijie.com>