

# Quick Start

# Thank you for purchasing the CPE. This CPE brings you a high speed wireless network connection.

This document will help you understand your CPE so you can start using it right away. Please read this document carefully before using your CPE.

For detailed information about the functions and configurations of the CPE, refer to the online help on the web management page that comes with the CPE.

## Getting to Know Your CPE

### Note:

- During thunderstorms and rainy weather, turn off and disconnect the CPE.
- The CPE function descriptions and illustrations in this document are for your reference only. The product you have purchased may vary.

## Application Scenario

The CPE can:

- Provide Internet access for Wi-Fi devices and computers.
- Connect to telephones for voice services.

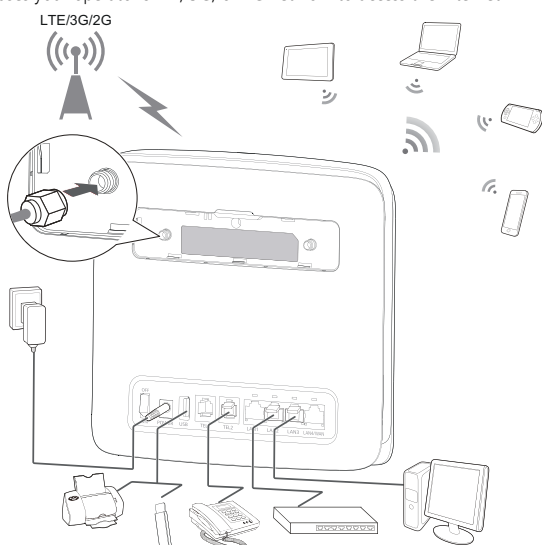
### Note:

When connected to a 2G network, the CPE supports circuit switched (CS) calls but not VoIP.

- Connect to fax machines for fax services.
- Be used to save and share files in USB storage devices.
- Connect to a USB printer.
- Expand LAN coverage together with hubs and switches.

### Scenario 1: Accessing the Internet Using an LTE, 3G, or 2G Network

The CPE uses your operator's LTE, 3G, or 2G network to access the Internet.



### Note:

- When the CPE is in use, you can alter its position or orientation to improve signal reception.
- The external antenna is an optional accessory. If it is not included in the package, you may contact an authorized dealer to buy an external antenna compatible with the CPE.

### Scenario 2: Accessing the Internet Using Ethernet (WAN)

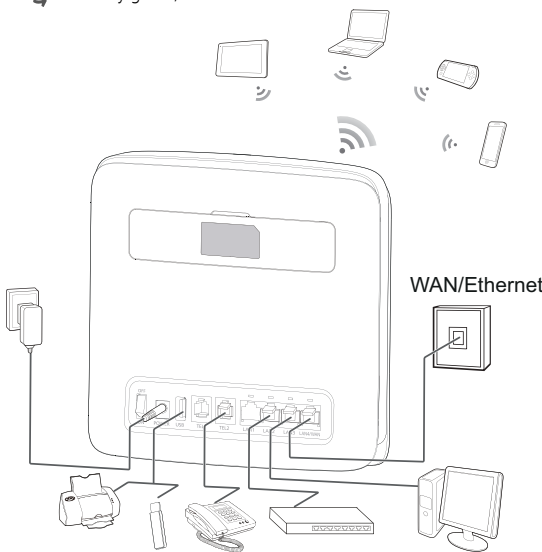
Connect the CPE's LAN4/WAN port to an Ethernet port using a network cable. You can then access the Internet through Ethernet, such as a home ADSL, hotel DHCP, or campus static IP broadband network. To access the Internet through Ethernet:

1. Use the network cable to connect the CPE to the Ethernet port.
2. Log in to the CPE's web management page and configure the parameters of the Ethernet connection.
  - Dynamic IP: Does not need to be configured.
  - PPPoE: Enter the user name and password for a dial-up connection.
  - Static IP: Select static IP in connection mode and enter the IP address, default gateway address, DNS server address, and so on.

### Note:

For detailed information about the user name, password, IP address, default gateway address, DNS server address, and other settings, contact your operator.

3. When  is steady green, the Ethernet connection is successful.

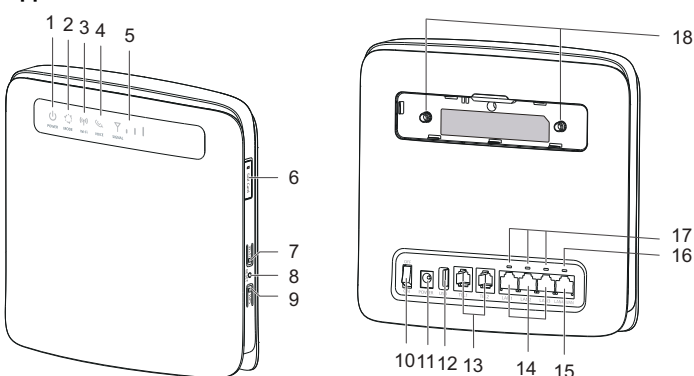


## Selecting the Installation Environment

Obstacles such as concrete and wooden walls will affect the transmission of the network signal. It is recommended that when you install CPE you choose an open space.

Keep the CPE away from equipment that generates strong magnetic and electric fields, for instance microwaves, refrigerators, and satellite receivers.

## Appearance



### ① Power indicator

- On: CPE turned on
- Off: CPE turned off

### ② Mode indicator

- Steady cyan: The CPE is connected to an LTE network.
- Steady blue: The CPE is connected to a 3G network.
- Steady yellow: The CPE is connected to a 2G network.
- Steady green: The CPE is connected to an Ethernet network.
- Steady red:
  - The micro SIM card is not recognized, the PIN has not been entered, or the PIN verification failed.
  - The CPE failed to connect to a wireless network.
  - The CPE is overheating. Its network connection is disconnected so the device can cool down.

### ③ Wi-Fi indicator

- On: Wi-Fi function enabled

- Blinking: WPS interconnection verification is in progress. This process should not take longer than 2 minutes.
- Off: Wi-Fi function disabled

#### ④ **Voice indicator**

- On: Off-hook condition
- Blinking: Incoming call
- Off: On-hook condition

#### ⑤ **Signal indicator**

- On: Indicates network signal strength. Full light indicates strong signal.
- Off: No network signal.

#### ⑥ **Micro SIM card slot**

Accommodate a micro SIM card.

#### ⑦ **Wi-Fi button**

Press and hold for less than 1 second to enable or disable the Wi-Fi function.

#### **Note:**

The CPE supports 2.4 GHz and 5 GHz Wi-Fi networks.

#### ⑧ **Reset button**

Press and hold for more than 3 seconds to restore the CPE to its factory settings.

#### **Note:**

Restoring the default settings of the CPE will override all the previous settings.

#### ⑨ **WPS button**

When WPS is enabled, press and hold the button for one to five seconds to set up a 2.4 GHz WPS connection, or press and hold the button for more than five seconds to set up a 5 GHz WPS connection.

#### ⑩ **Power button**

Press this button to power the CPE on or off.

#### ⑪ **Power port**

Connect to the CPE's power adapter.

#### ⑫ **USB port**

Connect to a USB storage device or USB printer.

#### **Note:**

- The CPE supports USB 1.1 and 2.0 storage devices in FAT16, FAT32, ext2, and ext3 formats. Storage devices with power supply requirements exceeding USB standards may not work properly. It is recommended that you prepare an external power supply in these cases.
- The CPE is compatible with samba-supported USB printers.
- This port cannot be connected to USB host devices, such as computers.

#### ⑬ **TEL ports (RJ11)**

Connect to telephones or a fax machine.

#### **Note:**

Do not connect a telephone and fax machine to the CPE simultaneously.

#### ⑭ **LAN ports (RJ45)**

Connect to computers, switches, or other network devices.

#### ⑮ **LAN4/WAN port (RJ45)**

Connect to an Ethernet port, computer, switch, or other network device.

#### ⑯ **LAN4/WAN indicator**

- On: The port is connected to an Ethernet port or device.
- Blinking: Data is being transmitted through the port.
- Off: The port is not connected to an Ethernet port or device.

#### ⑰ **LAN indicators**

- On: The port is connected to a device.
- Blinking: Data is being transmitted through the port.
- Off: No device is connected to the port.

#### ⑱ **External antenna ports (SMA-J)**

Connect to external antennas (optional).

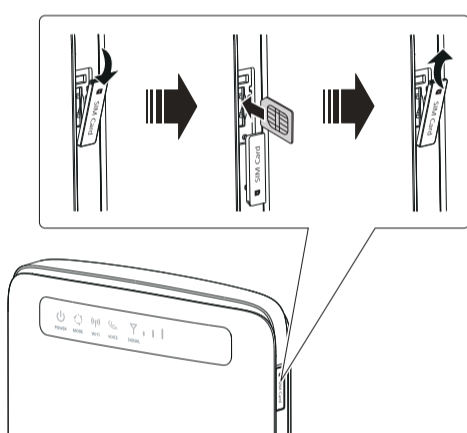
#### **Note:**

Before you connect an external antenna to the CPE, remove the CPE's rear cover.

## Getting Started

### Installing the Micro SIM Card

Install the micro SIM card according to the illustration.

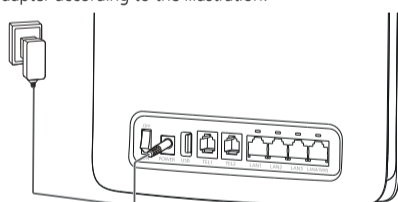


#### **Note:**

- When removing the micro SIM card, gently press the micro SIM card in, then release. The card will automatically pop out.
- Do not remove the micro SIM card when the CPE is powered on. Doing so will affect the performance of your CPE, and data stored on the micro SIM card may be lost.

### Connecting to a Power Adapter

Install the power adapter according to the illustration.



#### **Note:**

- Use the provided power adapter. Use of an incompatible power adapter or one from an unknown manufacturer may cause the CPE to malfunction, fail, or could even cause a fire. Such use voids all warranties, whether expressed or implied, on the product.
- The CPE's power adapter model is HW-120200XYW. X and Y represent letters or numbers that vary by region. For details about the specific adapter model, contact an authorized dealer.

## Logging In to the Web Management Page

The web-based configuration utility can be used for initial CPE installation, parameter configuration, and function management through the browser.

The Windows 7 operating system and Internet Explorer 8.0 are used as an example. Ensure that the CPE is connected to the computer. Follow these steps to log in to the web management page:

1. Connect CPE cables.
2. Enter the computer's IP address so that the IP addresses of the computer and the CPE are in the same network segment.

#### **Note:**

- The CPE's default IP address is 192.168.8.1, the subnet mask is 255.255.255.0.
- It is recommended that you use the automatically obtained IP addresses for the computer and domain name system (DNS) server. If you manually configure the computer IP address, you must set the DNS server IP address to the CPE's IP address. Otherwise, you will fail to log in to the web management page.

3. Open the browser, and enter **http://192.168.8.1** in the address box.
4. Enter the user name and password to log in to the web management page.

#### **Note:**

The default user name and password are printed on the CPE label.

