



AC750 Wireless Dual Band 4G LTE Router

Dual Band Wi-Fi Where You
Need It

Archer MR200



4G 4G(TDD&FDD)/3G
Compatible

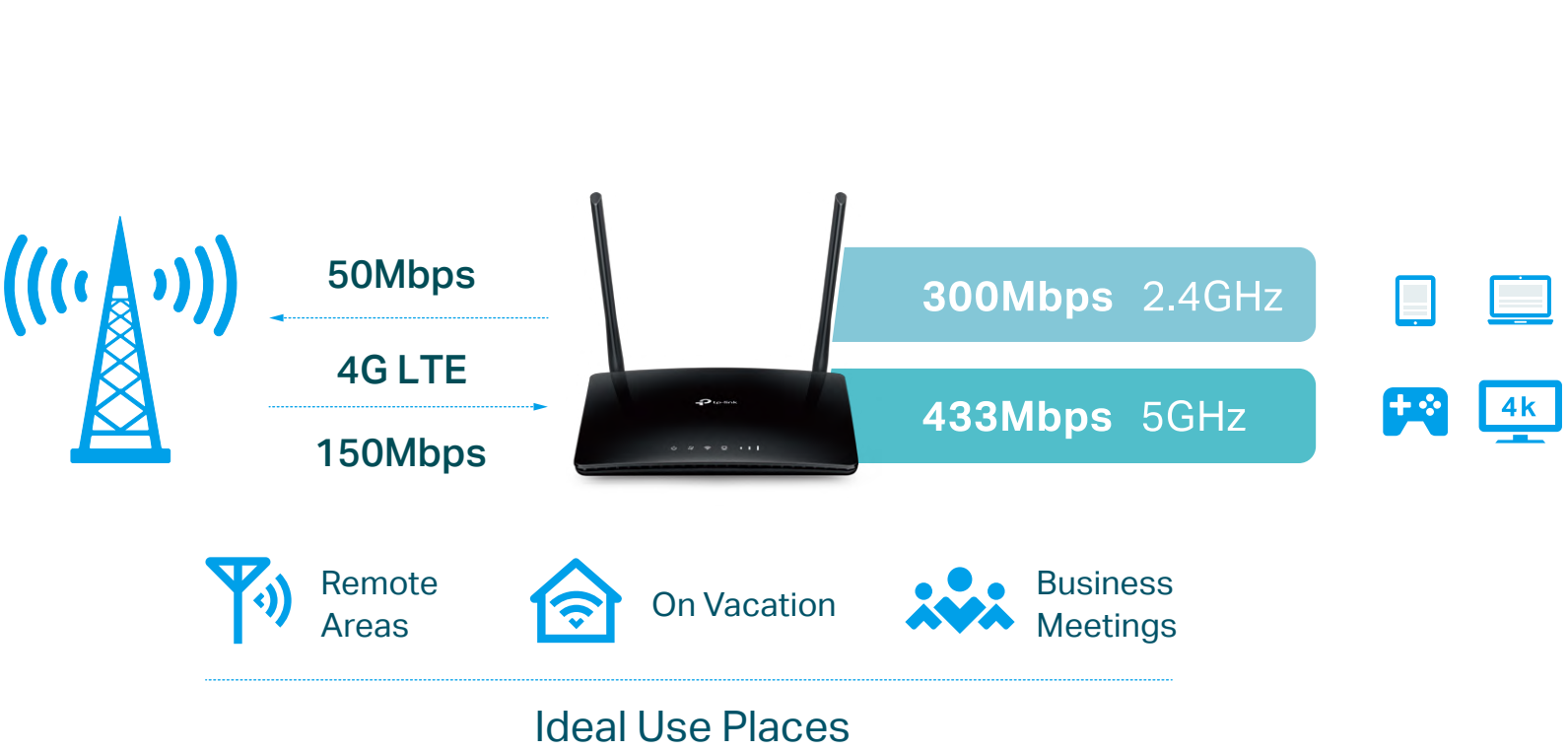
300Mbps+433 Mbps
Dual Band Wi-Fi

Qualcomm Inside for
Better Reliability

Highlights

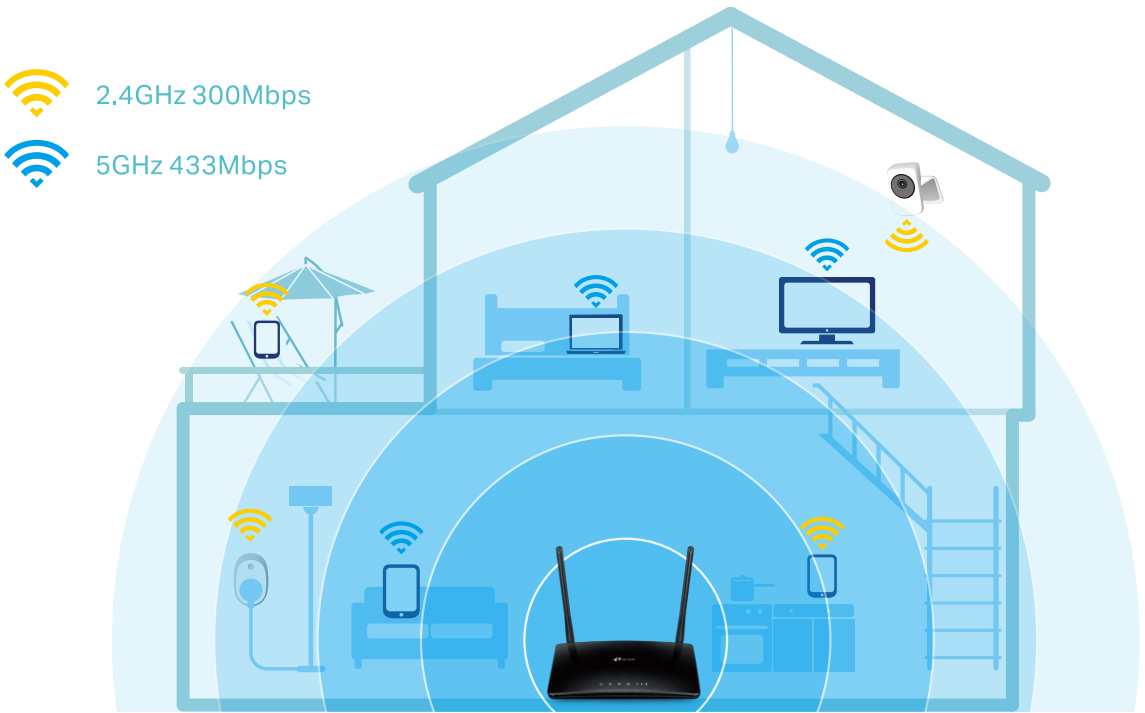
Superfast 4G LTE Speed & Stream-Ready AC Wi-Fi

The Archer MR200 uses 4G LTE technology to achieve speeds of up to 150Mbps download and 50Mbps upload. It also shares a simultaneous dual band Wi-Fi network with maximum speeds of 300Mbps on 2.4GHz and 433Mbps on 5GHz for gaming, streaming, file-sharing and more.



Design for Maximum Network Coverage

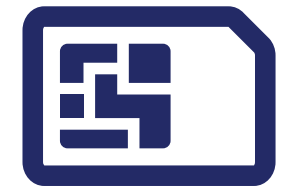
Advanced high gain antennas make efficient and stable connections to every device. Power Amplifier and Low Noise Amplifier boost sending and receiving capabilities, creating a wide-coverage Wi-Fi network for your home.



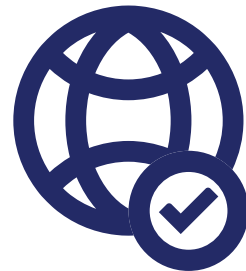
Highlights

Plug and Play

Simply insert your 3G/4G SIM card into the built-in slot, turn on the MR200 and start surfing.



SIM Card

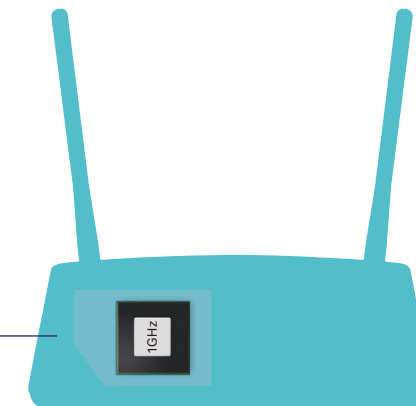


Start Surfing!

More Devices, More Stability

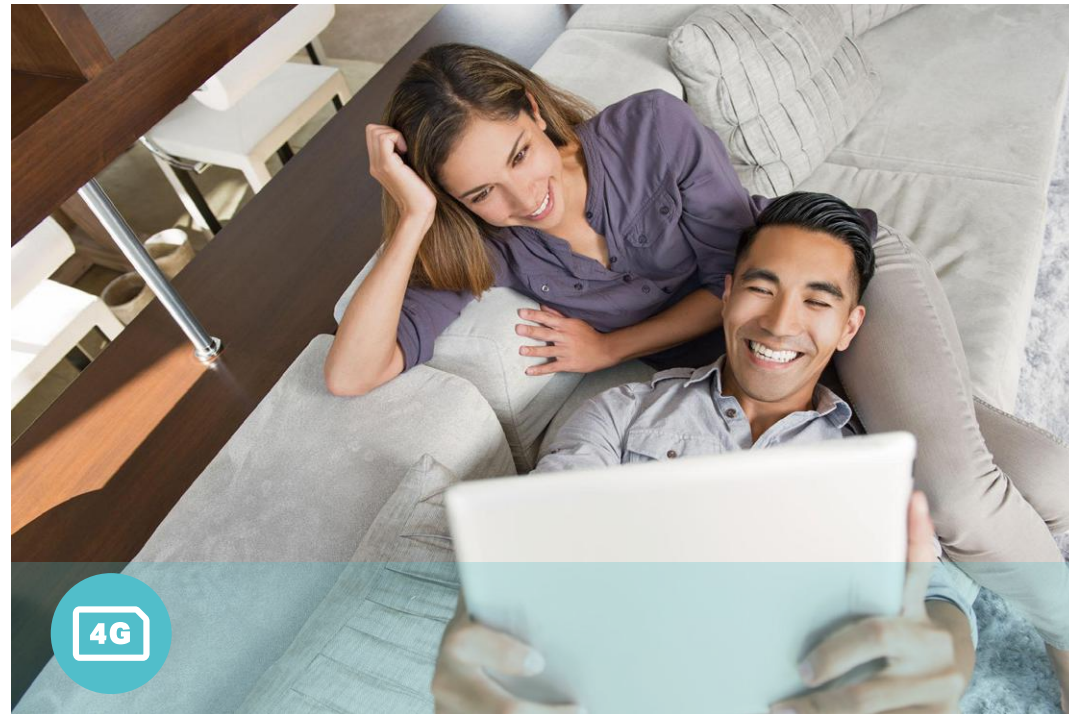
Connect up to 64 wireless devices with ease, thanks to a powerful Qualcomm processor that boosts data transfer speeds while ensuring dependable network stability.

**Up to
64
devices**



Qualcomm CPU

Features



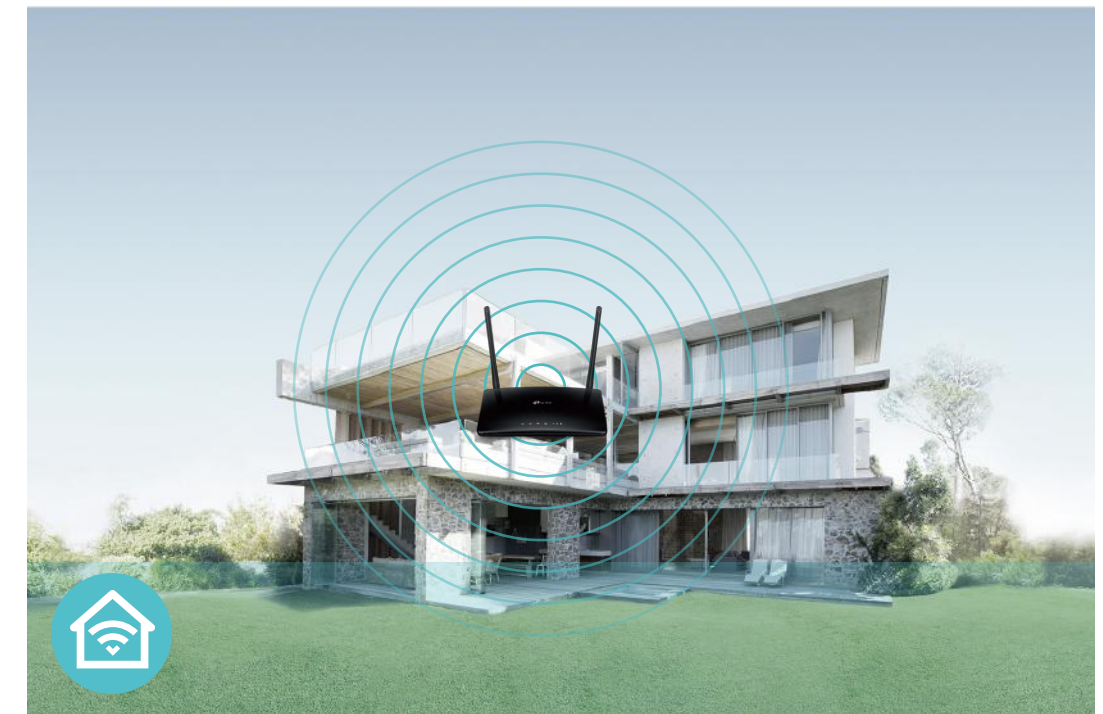
4G LTE

- 4G LTE – Ideal for cutting-edge 4G LTE network
- Faster Connections – Up to 150Mbps download speed and 50Mbps upload speed
- Backward Compatible – Compatible with 4G/3G network



Wi-Fi Speed

- Superior Wireless Speed – Combined wireless speeds up to 300Mbps over 2.4GHz, and 433Mbps over 5GHz
- 802.11 ac Standard – Provides a data transfer rate 3 times faster than 802.11n for each stream



Wi-Fi Range

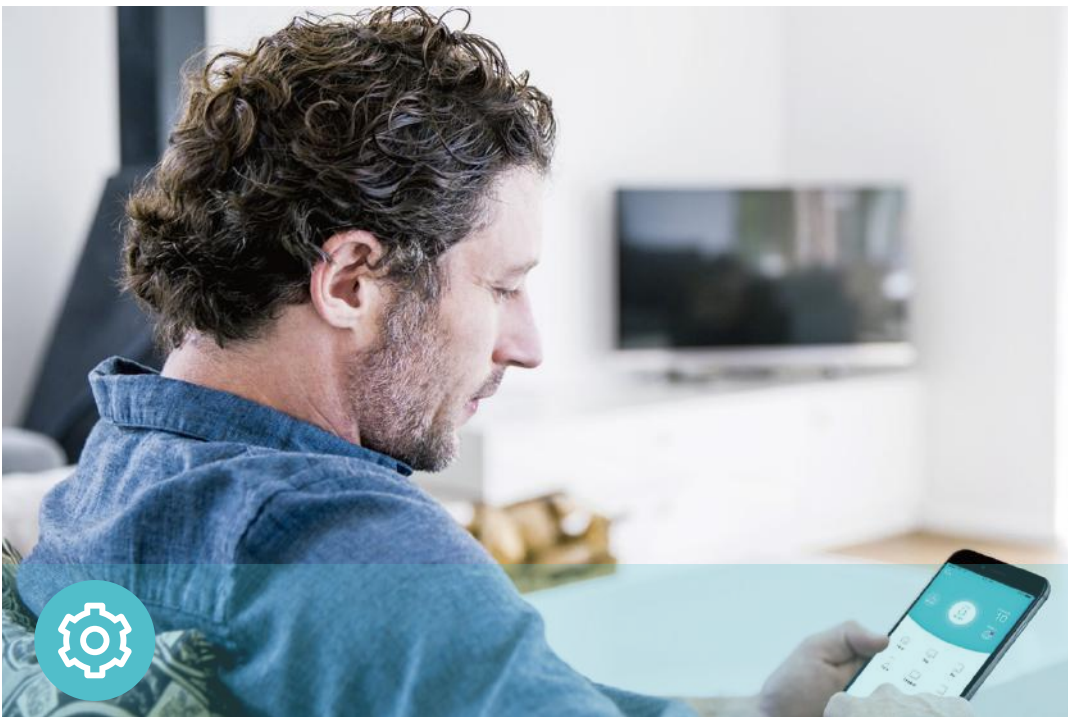
- Great Coverage – Powerful, integrated antennas provide stable wireless connections and better coverage

Features



Reliability

- **Simultaneous Dual Band** – Separate Wi-Fi bands enable more devices to connect to your network without a drop in performance
- **Easy Bandwidth Management** – Advanced QoS makes it easier for you to manage the bandwidth of connected devices
- **Superior Stability** – Powerful processor enables you to connect up to 64 wireless devices with ease



Ease of Use

- **Intuitive Web UI** – Ensures quick and simple installation without hassle
- **Fast Encryption** – One-touch WPA wireless security encryption with the WPS button
- **Wi-Fi On/Off** – Conveniently turn on or off wireless radios as required
- **Hassle-free Management with Tether App** – Network management is made easy with the TP-Link Tether App, available on any Android and iOS device
- **Online Upgrade** – Keeps you informed of the latest firmware and allows online upgrade on the web UI



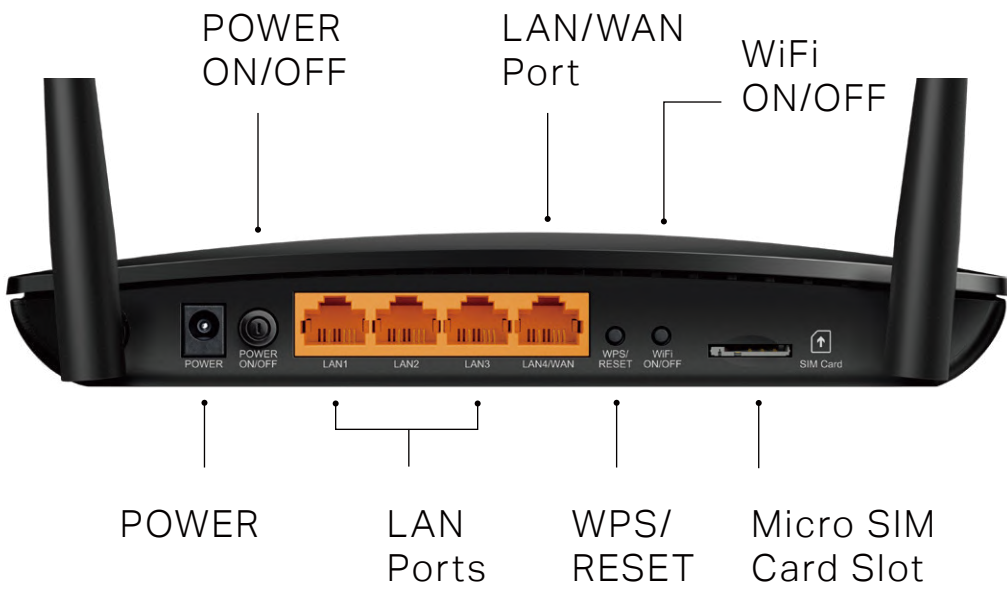
Security

- **Guest Network** – Keeps your main network secure by creating a separate network for friends and visitors
- **Access Control** – Establishes a whitelist or blacklist to allow or restrict certain devices to access the internet
- **Parental Controls** – Restrict internet access time and contents for children devices
- **Encryptions for Secure Network** – WPA-PSK and WPA2-PSK encryptions provide active protection against security threats

Specifications

Hardware

- Interface: 3 10/100Mbps LAN Ports, 1 10/100Mbps LAN/WAN Port, 1 Micro SIM Card Slot
- Buttons: POWER ON/OFF Button, WPS/RESET Button, Wi-Fi ON/OFF Button
- Antennas: 2 Advanced High Gain External Antennas
- External Power Supply: 12V/1A
- Dimensions (W x D x H): 7.95 × 6.42 × 1.32 in. (202 × 163 × 33.6mm)



Wireless

- Network Type
 - 4G: FDD-LTE Cat4 (800/900/1800/2100/2600MHz), TDD-LTE (1900/2300/2500/2600MHz)
 - 3G: DC-HSPA+/HSPA/UMTS (900/2100MHz)
- Wireless Standards: IEEE 802.11ac/n/a 5GHz, IEEE 802.11b/g/n 2.4GHz
- Frequency: 2.4GHz and 5GHz
- Signal Rate: 300Mbps at 2.4GHz, 433Mbps at 5GHz
- CE EIRP: <20dBm(2.4GHz), <23dBm(5GHz)
- Reception Sensitivity:
 - 5GHz:
 - 11a 54M: -74dBm
 - 11ac HT20: -67dBm
 - 11ac HT40: -64dBm
 - 11ac HT80 : -60dBm
 - 11n HT20: -71dBm
 - 11n HT40: -70dBm
 - 2.4GHz:
 - 11g 54M: -76dBm
 - 11n HT20: -73dBm
 - 11n HT40: -67dBm
- Wireless Function: Enable/Disable Wireless Radio, Wireless Schedule, WMM, Wireless Statistics
- Wireless Security: 64/128-bit WEP, WPA/WPA2, WPA-PSK/WPA2-PSK encryptions

Specifications

Software

- Operating Modes: 3G/4G Router, Wireless Router
- WAN Type: Dynamic IP/Static IP/PPPoE/PPTP(Dual Access)/L2TP(Dual Access)
- DHCP: Server, DHCP Client List, Address Reservation
- Quality of Service: WMM, QoS
- Port Forwarding: Virtual Server, Port Triggering, UPnP, DMZ
- Dynamic DNS: DynDns, NO-IP
- VPN Passthrough: PPTP, L2TP, IPSec
- VPN Server: PPTP VPN, IPSec VPN , OpenVPN
- Access Control: Parental Controls, Local Management Control, Host List, Access Control
- Firewall Security: DoS, SPI Firewall, IP and MAC Address Binding
- Protocols: IPv4, IPv6
- Management: Access Control, Local Management, Remote Management
- Guest Network: 2.4GHz guest network x 1, 5GHz guest network x 1

Others

- Certification:
CE, RoHS
- Requirements:
Microsoft Windows 98SE/NT/2000/XP/Vista™/7/8/8.1/10, MAC OS, NetWare, UNIX or Linux

Internet Explorer 11, Firefox 12.0, Chrome 20.0, Safari 4.0, or other Java-enabled browser

Micro SIM Card
- Environment:
Operating Temperature: 0℃~40℃ (32°F ~104°F)
Storage Temperature: -40℃~70℃ (-40°F ~158°F)

Operating Humidity: 10%~90% non-condensing
Storage Humidity: 5%~90% non-condensing
- Package Contents
AC750 Wireless Dual Band 4G LTE Router Archer MR200

Power Adapter

Ethernet Cable

Quick Installation Guide



For more information, please visit
<http://www.tp-link.com/en/products/details/Archer-MR200.html>
or scan the QR code left

Specifications are subject to change without notice. TP-Link is a registered trademark of TP-Link Technologies CO., Ltd. Other brands and product names are trademarks or registered trademarks of their respective holders. Copyright © 2018 TP-Link Technologies Co., Ltd. All rights reserved.

* Attention: This device may only be used indoors in all EU member states and EFTA countries.

* Maximum wireless speed of up to 750Mbps is the theoretical data rate derived from IEEE standard 802.11 specifications. Actual data throughput and wireless coverage will vary due to network conditions and environmental factors including volume of network traffic, building materials and construction, network overhead, actual data throughput rate, and wireless coverage. TP-Link makes no express or implied representations or warranties about this product's compatibility with any future standards.